

■ SLP Large Diameter Pilot Operated Solenoid Valve-Normally Closed



Technical Specifications

Medium: Air, Gas, Water, Liquid, Oil (below 20cts)
 Orifice: 13-50mm
 Medium Temp: -5~120°C
 Ambient Temp: 0~65°C
 Voltage: AC220V, AC110V, DC24V, DC12V
 Connection: G-Thread, NPT-Thread
 Mode of action: Pilot Operated
 Pressure: 0.5~16bar
 Body material: Brass, Stainless Steel
 Sealing material: NBR, EPDM, VITON
 Protection class: IP65

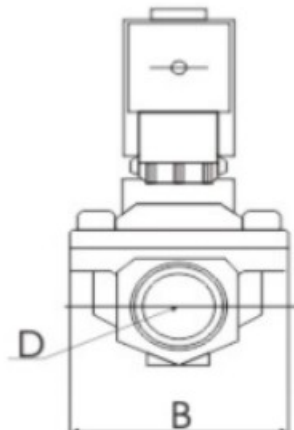
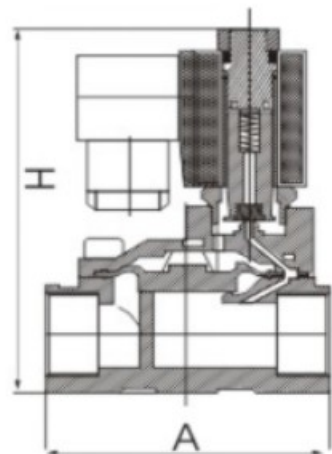
Options

EPDM(E): suitable to water, hot water, gas, freon, the max. 110°C;
 In case you choose EPDM, please state "E" in your order.
 Viton(V): suitable to hot water, acid, alkali, chemical salt, oil and hydrocarbon; the MAX. 130°C. In case you choose Viton, please state "V" in your order.
 Metal cover coil (IP65) is standard.
 Thread: If different from G connection, it should be indicated.

Pilot operated solenoid valves 2/2way N/C or N/O

This solenoid valve uses the force of the fluid to operate the valve via a suitable integral pilot valve. The inlet pressure must always be at least the same as the minimum ΔP figure shown on the data sheets. Using the same coils as direct acting valves much higher fluid volumes and pressures can be controlled with this solenoid valve.

Overall Dimension Chart



Dimension Sheet (mm)

| Part | A | B | H | Weight (kg) |
|-----------|-----|-----|-----|-------------|
| SLP130-10 | 67 | 48 | 112 | 0.75 |
| SLP130-15 | 67 | 48 | 112 | 0.7 |
| SLP200-20 | 75 | 58 | 118 | 0.82 |
| SLP250-25 | 96 | 69 | 125 | 1.3 |
| SLP350-35 | 131 | 96 | 150 | 2.9 |
| SLP400-40 | 131 | 96 | 150 | 2.7 |
| SLP500-50 | 165 | 120 | 165 | 3.9 |

Ordering Code

| Valve Type | Orifice | Pipe Size | Connection | Voltage | Function Type | Sealing | Body Material |
|------------|----------|------------|----------------|---------|---------------|-----------|------------------|
| SLP | 130 | 25 | N | AC220V | H | V | J |
| | 130=13mm | 10: 3/8" | Black:G-Thread | AC220V | Black:N/C | Blank:NBR | Black:Brass |
| | 200=20mm | 15: 1/2" | N:NPT Thread | AC110V | H:N/O | E:EPDM | J:Stainlee steel |
| | 250=25mm | 20: 3/4" | | DC24V | | V:VITON | |
| | 350=35mm | 25: 1" | | DC12V | | | |
| | 400=40mm | 32: 1 1/4" | | | | | |
| | 500=50mm | 40: 1 1/2" | | | | | |
| | | 50: 2" | | | | | |

Valve Selection List

| Pipe Connection | Orifice (mm) | Cv | Working Pressure (kgf/cm ²) | | | | | | Max. Temp. °C | Sealing Material | Coil Power | | Normal Order | |
|-----------------|--------------|-----|---|---------|----|--------------|----|-----------|---------------|------------------|------------|--------|--------------|-------------|
| | | | Min | Air Gas | | Water Liquid | | Light Oil | | | VA | W | | |
| | | | | AC | DC | AC | DC | AC | | | DC | AC220V | | DC24V |
| 3/8" | 13 | 4.5 | 0.5 | 16 | 16 | 16 | 16 | 13 | 13 | 80 | NBR | 22 | 13 | SLP130-10 |
| | | | | 16 | 16 | 16 | 16 | 13 | | 130 | EPDM | | | SLP130-10-E |
| | | | | 16 | 16 | 16 | 16 | 13 | 13 | 120 | VITON | | | SLP130-10-V |
| 1/2 " | 13 | 4.5 | 0.5 | 16 | 16 | 16 | 16 | 13 | 13 | 80 | NBR | 22 | 13 | SLP130-15 |
| | | | | 16 | 16 | 16 | 16 | 13 | | 130 | EPDM | | | SLP130-15-E |
| | | | | 16 | 16 | 16 | 16 | 13 | 13 | 120 | VITON | | | SLP130-15-V |
| 3/4" | 20 | 7.6 | 0.5 | 16 | 16 | 16 | 16 | 13 | 13 | 80 | NBR | 22 | 13 | SLP200-20 |
| | | | | 16 | 16 | 16 | 16 | 13 | | 130 | EPDM | | | SLP200-20-E |
| | | | | 16 | 16 | 16 | 16 | 13 | 13 | 120 | VITON | | | SLP200-20-V |
| 1 " | 25 | 12 | 0.5 | 16 | 16 | 16 | 16 | 13 | 13 | 80 | NBR | 22 | 13 | SLP250-25 |
| | | | | 16 | 16 | 16 | 16 | 13 | | 130 | EPDM | | | SLP250-25-E |
| | | | | 16 | 16 | 16 | 16 | 13 | 13 | 120 | VITON | | | SLP250-25-V |
| 1 1/4" | 35 | 22 | 0.5 | 16 | 16 | 16 | 16 | 13 | 13 | 80 | NBR | 22 | 13 | SLP350-35 |
| | | | | 16 | 16 | 16 | 16 | 13 | | 130 | EPDM | | | SLP350-35-E |
| | | | | 16 | 16 | 16 | 16 | 13 | 13 | 120 | VITON | | | SLP350-35-v |
| 1 1/2 " | 40 | 30 | 0.5 | 16 | 16 | 16 | 16 | 13 | 13 | 80 | NBR | 22 | 13 | SLP400-40 |
| | | | | 16 | 16 | 16 | 16 | 13 | | 130 | EPDM | | | SLP400-40-E |
| | | | | 16 | 16 | 16 | 16 | 13 | 13 | 120 | VITON | | | SLP400-40-V |
| 2" | 50 | 48 | 0.5 | 16 | 16 | 16 | 16 | 13 | 13 | 80 | NBR | 22 | 13 | SLP500-50 |
| | | | | 16 | 16 | 16 | 16 | 13 | | 130 | EPDM | | | SLP500-50-E |
| | | | | 16 | 16 | 16 | 16 | 13 | 13 | 120 | VITON | | | SLP500-50-V |