

■ SLP Large Diameter Flange Solenoid Valve-Normally Closed

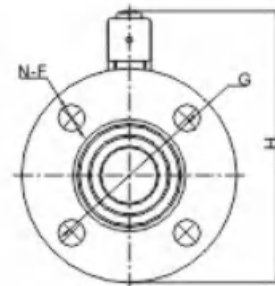
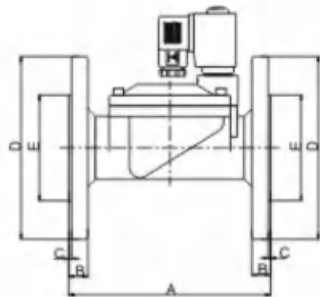


Technical Specifications

Medium: Air, Gas, Water, Liquid, Oil (below 20cts)
 Orifice: 25~100mm
 Medium Temp: -5~120°C
 Ambient Temp: 0~65°C
 Voltage: AC220V, AC110V, DC24V, DC12V
 Connection: Flange
 Mode of action: Pilot Operated
 Pressure: 0.5~16bar
 Body material: Brass, Stainless Steel
 Sealing material: NBR, EPDM, VITON
 Protection class: IP65 IP54

Pilot operated solenoid valves 2/2way N/C or N/O

This solenoid valve uses the force of the fluid to operate the valve via a suitable integral pilot valve. The inlet pressure must always be at least the same as the minimum ΔP figure shown on the data sheets. Using the same coils as direct acting valves much higher fluid volumes and pressures can be controlled with this solenoid valve.



Dimension Sheet (mm)

Part No.	DN	A	B	C	φD	φE	N-φF	φG	H
SLP25-F-J	25	134	13	2	110	58	4-φ14	85	160
SLP35-F-J	32	160	15	2	135	74	4-φ14	100	175
SLP40-F-J	40	160	15	2	145	84	4-φ14	110	180
SLP50-F-J	50	200	16	2	160	88	4-φ18	125	207
SLP65-F-J	65	250	19	2	185	118	4-φ18	145	250
SLP80-F-J	80	270	19	3	202	134	4-φ18	160	262
SLP100-F-J	100	342	21	3	222	162	8-φ18	180	287

Ordering Code

Valve Type	Orifice	Connection	Voltage	Coils	Function Type	Sealing	Body Material
SLP	25	F	AC220V	D	H	E	J
	25=25mm	F:Flange	AC220V	Black:Common	Black:N/C	Black:NBR	Black:Brass
	35=35mm		AC110V	A:Metallic Housing	H:N/O	E:EPDM	J:Stainlee steel
	40=40mm		DC24V	D:DIN Plastic		V:VITON	
	50=50mm		DC12V				
	65=65mm						
	80=80mm						
	100=100mm						

Valve Selection List

Orifice (mm)	Cv	Working Pressure (kgf/cm ²)		Max. Temp. °C	Sealing Material	Coil Power		Normal Order Code	
		Min	Air, Gas, Water, Light Oil, Liquid			VA	W		
						AC220V	DC24V		
25	12	0.5	16	16	80	NBR	22	13	SLP25-F-J
					130	EPDM			SLP25-F-E-J
					120	VITON			SLP25-F-V-J
35	22	0.5	16	16	120	NBR	22	13	SLP35-F-J
					130	EPDM			SLP35-F-E-J
					120	VITON			SLP35-F-V-J
40	30	0.5	16	16	80	NBR	22	13	SLP40-F-J
					130	EPDM			SLP40-F-E-J
					120	VITON			SLP40-F-V-J
50	48	0.5	16	16	120	NBR	22	13	SLP50-F-J
					130	EPDM			SLP50-F-E-J
					120	VITON			SLP50-F-V-J
65	52	0.5	12	10	80	NBR	33	20	SLP65-F-J
					130	EPDM			SLP65-F-E-J
					120	VITON			SLP65-F-V-J
80	80	0.5	12	10	120	NBR	33	20	SLP80-F-J
					130	EPDM			SLP80-F-E-J
					120	VITON			SLP80-F-V-J
100	128	0.5	12	10	80	NBR	33	20	SLP100-F-J
					130	EPDM			SLP100-F-E-J
					120	VITON			SLP100-F-V-J

2W Large Diameter Flange Solenoid Valve -Normally Colsed

Technical Specifications

Medium : Air,Gas,Water,Liquid,Oil(below 20cts)
 Orifice: 15-50mm
 Temperature: -5~80°C
 Voltage: AC220V,AC110V,DC24V,DC12V
 Connection: Flange
 Mode of action: Sime-direct acting
 Pressure: 0~10bar
 Body material: Brass,Stainless Steel
 Sealing material: NBR,EPDM,VITON
 Protection class: IP65

Options

EPDM(E):suitable to water,hot,water,gas,freon,the max.110°C;
 In case you choose EPDM. please state "E" in your order.
 Viton(V):suitable to hot water,acid,alkali,chemical salt,oil and hydrocarbon;the MAX. 130°C. In case you choose Viton,please state "V" in your order.
 Metal cover coil(IP54) is standard.
 Thread: If different from G connection, it should be indicated.

Ordering Code

Valve Type	Orifice	Connection	Voltage	Coils	Function	Sealing	Body Material
2W	15	F	AC220V	D	H	E	J
	150=15mm	F:Flange	AC220V	Black:Common	Black:N/C	Black:NBR	Black:Brass
	200=20mm		AC110V	A:Metallic Housing	H:N/O	E:EPDM	J:Stainlee steel
	320=32mm		DC24V	D:DIN Plastic		V:VITON	
	400=40mm		DC12V				
	500=50mm						



Dimension Sheet

Part No.	DN	L	D	H	K	d	C	f	n-φ
2W15-F-J	18	106	95	152	65	45	14	2	4-φ14
2W20-F-J	18	106	105	152	75	56	16	2	4-φ14
2W25-F-J	25	135	115	165	85	65	16	3	4-φ14
2W32-F-J	32	142	140	224	100	76	18	3	4-φ18
2W40-F-J	40	149	150	236	110	84	18	3	4-φ18
2W50-F-J	50	184	165	256	125	99	20	3	4-φ18

Valve Selection List

Orifice (mm)	Cv	Working Pressure (kgf/cm ²)		Max. Temp. °C	Sealing Material	Coil Power		Normal Order Code	
		Min	Air, Gas, Water, Light Oil, Liquid			VA	W		
						AC	DC		AC220V
15	7.2	0	6	6	80	NBR	20	20	2W15-F-J
					130	EPDM			2W15-F-E-J
					120	VITON			2W15-F-V-J
20	7.2	0	6	6	80	NBR	20	20	2W20-F-J
					130	EPDM			2W20-F-E-J
					120	VITON			2W20-F-V-J
25	12	0	6	6	80	NBR	20	32	2W25-F-J
					130	EPDM			2W25-F-E-J
					120	VITON			2W25-F-V-J
32	24	0	6	6	80	NBR	30	38	2W32-F-J
					130	EPDM			2W32-F-E-J
					120	VITON			2W32-F-V-J
40	29	0	6	6	80	NBR	30	38	2W40-F-J
					130	EPDM			2W40-F-E-J
					120	VITON			2W40-F-V-J
50	48	0	6	6	80	NBR	30	38	2W50-F-J
					130	EPDM			2W50-F-E-J
					120	VITON			2W50-F-V-J

Notes:If you want brass body,the model for example 2W20-F

DF Liquid Flange Solenoid Valve Normally Closed

Technical Specifications

Medium: Air, Gas, Water, Liquid, Oil (below 20cts)
 Orifice: 40-150mm
 Temperature: -5~80°C
 Voltage: AC220V, AC110V, DC24V, DC12V
 Connection: Flange
 Mode of action: pilot Operated
 Pressure: 0.3~12bar
 Body material: Cast Iron
 Sealing material: NBR
 Protection class: IP65 IP54



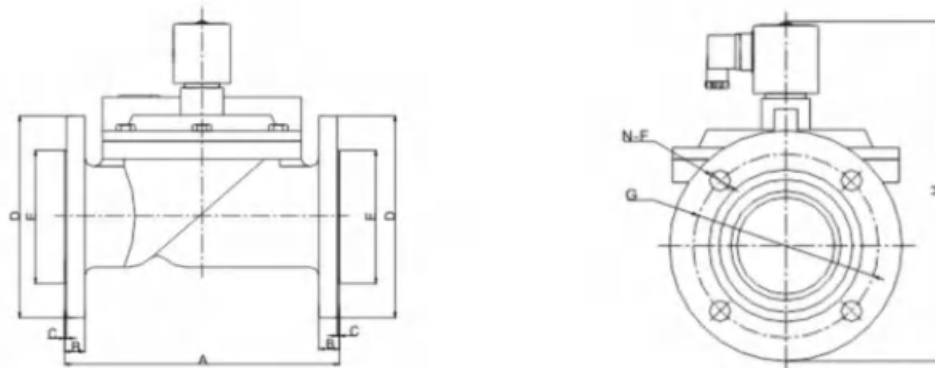
Options

This solenoid valve uses the force of the fluid to operate the valve via a suitable integral pilot valve. The inlet pressure must always be at least the same as the minimum ΔP figure shown on the data sheets. Using the same coils as direct acting valves much higher fluid volumes and pressures can be controlled with this solenoid valve.

Ordering Code

Valve Type	Orifice	Connection	Voltage	Coils	Function Type
DF	40	F	AC220V	D	H
	40=40mm	F: Flange	AC220V	Black: Common	Black: N/C
	50=50mm		AC110V	A: Metallic Housing	H: N/O
	65=65mm		DC24V	D: DIN Plastic	
	80=80mm		DC12V		
	100=100mm				
	125=125mm				
	150=150mm				

Overall Dimension Chart



Dimension Sheet (mm)

Part No.	DN	A	B	C	φD	φE	N-φF	φG	H
DF40-F	40	155	15	2	150	88	4-φ18	110	205
DF50-F	50	200	16	2	160	88	4-φ18	125	200
DF65-F	65	259	20	3	185	118	4-φ18	145	277
DF80-F	80	278	18	3	200	132	8-φ18	160	289
DF100-F	100	350	20	2	220	160	8-φ18	180	316
DF125-F	125	400	25	3	250	184	8-φ18	210	380
DF150-F	150	450	24	3	285	212	8-φ22	240	405

Valve Selection List

Orifice (mm)	Cv	Working Pressure (kgf/cm ²)			Max. Temp. °C	Sealing Material	Coil Power		Normal Order Code Voltage: AC220V Flange NBR Sealing Cast Iron Body
		Min	Water; Liquid				VA	W	
			AC	DC					
40	30	0.3	12	8	80	NBR	25	13	DF40-F
50	48	0.3	12	8	80	NBR	25	13	DF50-F
65	52	0.3	12	8	80	NBR	25	13	DF65-F
80	82	0.3	12	8	80	NBR	25	13	DF80-F
100	128	0.3	12	8	80	NBR	45	30	DF100-F
125	222	0.3	12	8	80	NBR	45	30	DF125-F
150	292	0.3	12	8	80	NBR	45	30	DF150-F

DF Liquid Solenoid Valve-Normally Closed

Technical Specifications

Medium: Air, Gas, Water, Liquid, Oil (below 20cts)
 Orifice: 13-50mm
 Temperature: -5~80°C
 Voltage: AC220V, AC110V, DC24V, DC12V
 Connection: G-Thread, NPT-Thread
 Mode of action: Pilot Operated
 Pressure: 0.3~12bar
 Body material: Stainless Steel
 Sealing material: NBR
 Protection class: IP65



Options

This solenoid valve uses the force of the fluid to operate the valve via a suitable integral pilot valve. The inlet pressure must always be at least the same as the minimum ΔP figure shown on the data sheets. Using the same coils as direct acting valves much higher fluid volumes and pressures can be controlled with this solenoid valve.

Valve Selection List

Pipe Connection	Orifice (mm)	Cv	Working Pressure (kgf/cm ²)			Max. Temp. °C	Sealing Material	Coil Power		Normal Order Code
			Min	Water; Liquid				VA	W	
				AC	DC			AC220V	DC24V	
3/8"	13	4.5	0.3	12	10	80	NBR	25	13	DF150-10
1/2"	13	4.5	0.3	12	10	80	NBR	25	13	DF150-15
3/4"	18	7.2	0.3	12	10	80	NBR	25	13	DF200-20
1"	23	12	0.3	12	10	80	NBR	25	13	DF250-25
1 1/4"	33	24	0.3	12	10	80	NBR	25	13	DF350-35
1 1/2"	40	30	0.3	12	10	80	NBR	25	13	DF400-40
2"	50	48	0.3	12	10	80	NBR	25	13	DF500-50

ZQDF Zero Pressure Solenoid Valve-Normally Closed

Technical Specifications

Medium: Steam, Gas, Water, Liquid
 Orifice: 17-40mm
 Medium Temp.: -5~180°C
 Ambient Temp.: 0~65°C
 Voltage: AC220V, AC110V, DC24V, DC12V
 Connection: G-Thread, NPT-Thread, Flange
 Mode of action: Step-Direct Acting
 Pressure: Normally Closed (N/C): 0~8bar
 Body material: Brass, Stainless Steel
 Sealing material: PTFE
 Protection class: IP65



Step-Direct lift type

These solenoid valve are a combination of the pilot operated valve and the direct acting valves. The armature is mechanically connected to the diaphragm on which there is a pilot orifice. With minimal pressure the solenoid valve acts like a direct acting valve. Total opening as well as a pilot operated valve with full opening.

Valve Selection List

Pipe Connection	Orifice (mm)	Cv	Working Pressure (kgf/cm ²)			Max. Temp. °C	Sealing Material	Coil Power		Normal Order Code
			Min	VA				W		
				AC220V	DC24V			DC24V		
1/2"	17	4.8	0	8	8	180	PTFE	50	30	ZQDF170-15
3/4"	17	4.8	0	8	8	180	PTFE	50	30	ZQDF170-20
1"	20	12	0	8	8	180	PTFE	50	30	ZQDF200-25
1 1/4"	30	22	0	8	8	180	PTFE	50	30	ZQDF300-35
1 1/2"	30	22	0	8	8	180	PTFE	50	30	ZQDF300-40
2"	40	30	0	8	8	180	PTFE	40	40	ZQDF400-50
Flange	20	12	0	8	8	180	PTFE	40	40	ZQDF25F
Flange	30	22	0	8	8	180	PTFE	40	40	ZQDF40F
Flange	40	30	0	8	8	180	PTFE	40	40	ZQDF50F

Notes: If you want Stainless Steel body, the model for example ZQDF170-15J